

**Proceedings of
2nd Field Seminar Held at
Katse, Mwingi District**

24th February, 1994

By

**Kenya/Japan Social
Forestry Training Project
Kitui.**

On-field Seminar Proceedings



Compiled by



N. M. Muniafu
Social Forestry Training Project.
Kitui.



Contents:

- Introduction

- Pre-liminary arrangements
 - Location
 - Date
 - Publicity
 - Working number
 - Arrangement itinerary.

- Venue layout

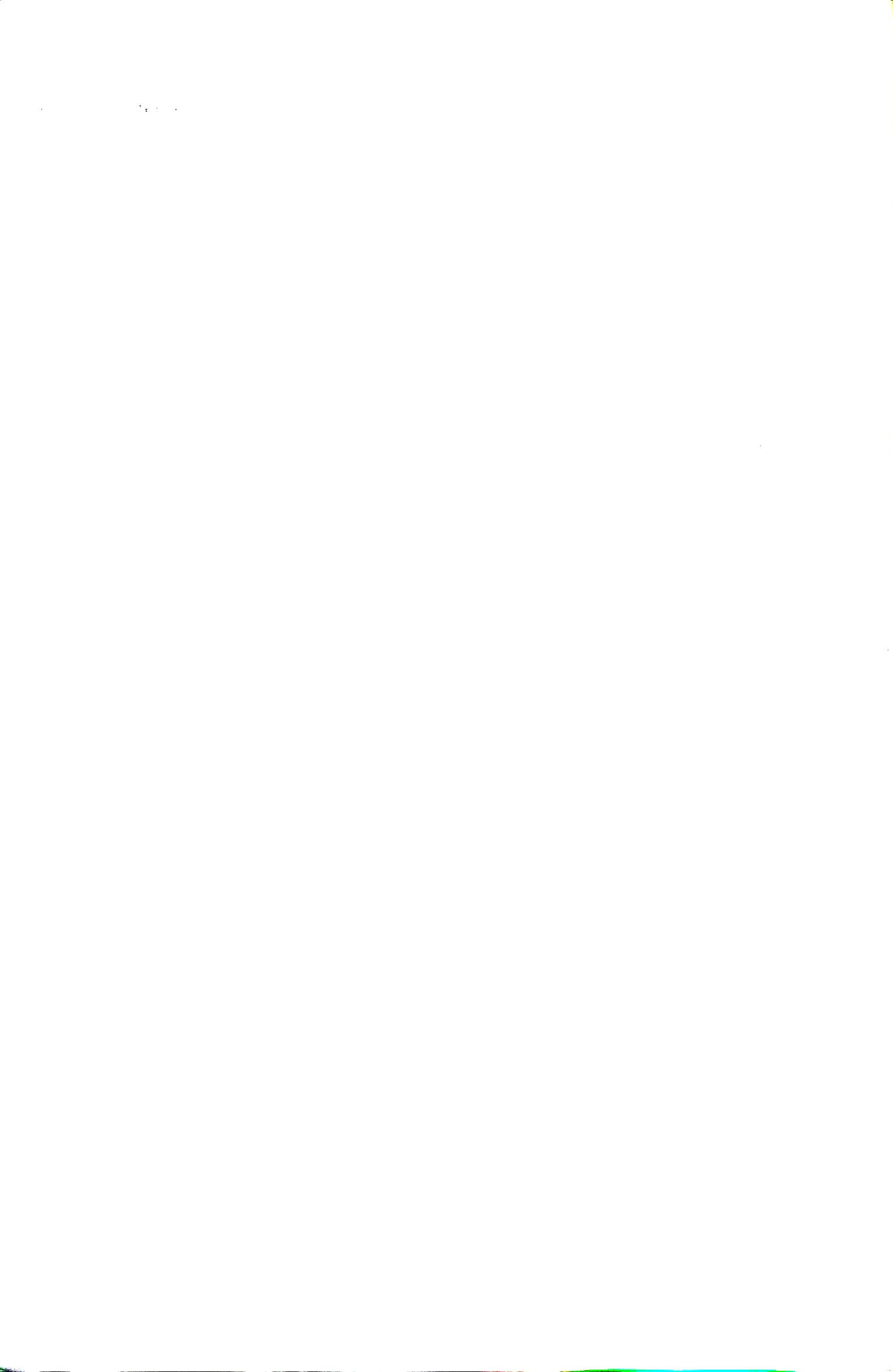
- Implementation

- From the participant's eyes
 - Farmers
 - Schools

- Outstanding issues and recommendations.

Appendix

- i. Announcement poster
- ii. Registration of farmers
- iii. Registration of schools
- iv. Equipment and materials
- v. Instructors and organizers.



Introduction

The Kenya/Japan Social forestry training Project (Kitui case) opened its doors to training of grassroots level personnel in December, 1988. This was as a result of the successful completion of the construction works of training facilities at the Centre. During the initial stages, 3 to 1 week courses were implemented. But later, 2-week courses were started following increased needs for forestry and related knowledge and the scope of those in need of social forestry knowledge widened.

Although this situation led to an increased number and type of courses offered by the Centre, the number of people reached by this institutional or on station training has however been low. The implication of this scenarial is that a greater number of those in dire need of social forestry knowledge cannot be realized through institutional training alone. Furthermore, there still exist participation limitations influencing attendance at Institutional courses negatively as here under especially for farmers;

Low literacy level.

This condition implies that many of the farmers who cannot communicate in Kiswahili or English and similarly write in these languages, cannot benefit from our Institutional courses. A pre-condition for attending is that they should write and read in Kiswahili at least. Normally the majority of farmers are illiterate, meaning, they cannot be nominated to participate in our Institutional courses.

Length of training period.

Since initiation of 2-week courses for the various groups of trainees at the centre, all except farmers get the duration compatible with their domestic chores. In the rural context therefore only progressive farmers are targeted for such 2-weeks courses, leaving out peasant farmers who need this training most.

Training facilities constructed under a grant aid from the government of Japan accommodates a maximum of thirty participants at a time, so that per a training year, only a few farmers can be trained. Nomination to training courses is hence according to capacity so that few farmers out of the many get trained.

Transport

Some farmers fail to report for training due to lack of transport means from their remote homes to a main town where there is free transport provided by the Project. Alternatively, if there are transport means to a main town, fare to such town becomes limiting to some farmers. The effect is therefore that farmers who could otherwise benefit from the training fail to do so and hence progressive farmers who manage fare do.

To address the fore mentioned inadequencies (limitations) and to remove the social in-equality generated by concentrating social forestry training to progressive farmers only, an On-Field seminar was introduced and made a training activity of Kitui Centre. It is intended that the On-Field Seminar should achieve the objective of contributing social forestry knowledge and techniques to farmers in remote areas who are unable of attending Institutional courses. The On-Field Seminar under discussion is the second such seminar and was held at Katse M.O.P.W.(Ministry of Public Works) ground in Kyuso Division of Mwingi District on 24th February 1994.

Preliminary Arrangements

Location

In line with the On-Field Seminar objective of targeting farmers from remote areas, Katse Location in Kyuso Division of the new Mwingi District was chosen. The location borders Embu and Tharaka/Nithi Districts to the North West and North respectively. The location has a harsh environment depicted by sparse population and isolated patches of drought resistant tree species namely Commiphora and Melia volkensii. Otherwise ground cover is poor. The main economic activity for the people here is Livestock Production especially of browsers (Goats).

A few farms could however be seen with stands of bulrush millet, an agricultural crop for arid conditions. There was little evidence of planted trees at the farmer's homes, on the contrary public Institutions in the area like the Katse Youth Polytechnic, Ministry of Public Works Offices and schools among others had quite good tree stands of mainly Cassia siamea. This could be a pointer to the fact that forestry extension services target Institutions more than individual farmers in this area, hence there was dire need therefore for somebody to arrest the situation. Our holding of the Field- Seminar in the location was therefore long over due. Since a locational Chief is the yard stick to the Community in his location, we always prefer to deal with one who has so far attended our Community Leaders Course.

Although the Chief for this location had not been trained at our Centre before to appreciate the importance of social forestry, his background training as a teacher before becoming Chief served quite well. He was richly aware of the importance of tree planting and the need for the people to be taught about it.

Katse MOPW ground, the Site of the On-field Seminar is about 120 Km from the training Centre, 57 km from Mwingi District headquarters and only 24 km from the Divisional headquarters, Kyuso. Please see map locating Seminar site (Figure 1).

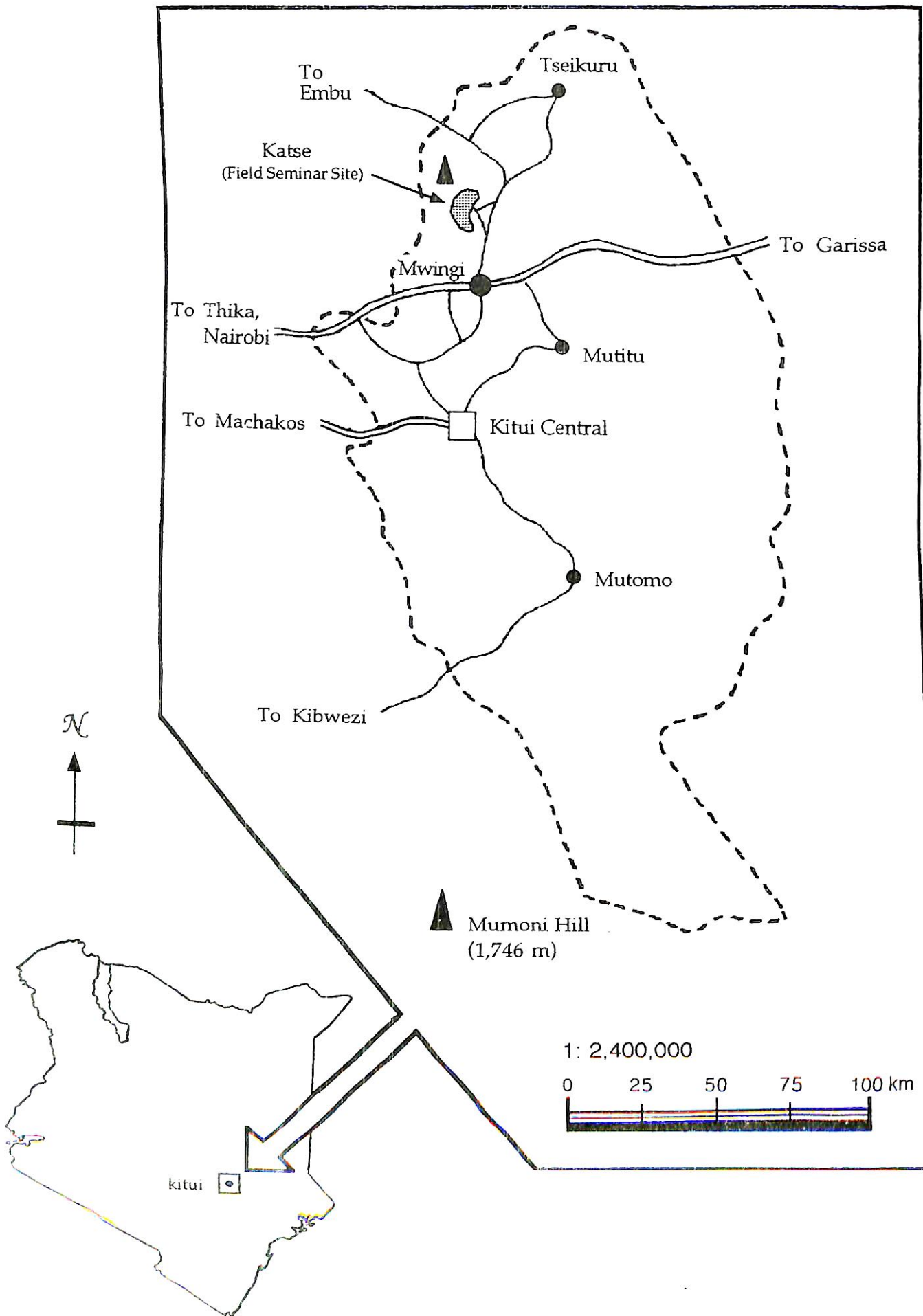


Figure 1. Field Seminar Site

Date

The criteria used to arrive at the date included the facts that

- (a) It does not fall in a rainy or busy season to inconvenience farmers.
- (b) It does not fall on a market day to divert attendance.
- (c) It does not fall on any other day with other events to offer choices to the farmers.

Guided by the fore mentioned principles, the date was set for 24th February, 1994, one day earlier than planned. It happened that 25th February 1994 was a market day at Katse shopping Centre, just a stone throw away from the seminar site.

Publicity

For such an event to succeed, alot of publicity and propagada has to be done. For this particular one, publicity was arranged through the Culture and Social Services officers, both at divisional and locational levels, the locational chief, divisional and locational Agriculture and Forestry officers among others. This was an improvement over the first one held at Mathima where only the Chief and social services officers were concerned. Indeed this was reflected in the good attendance realized. Another notable improvement was in the quality and number of posters announcing the event, where a total of two hundred copies were circulated through various agents. Please see appendix I on announcement poster. From this experience therefore, one can very confidently state that the many the people for publicizing the event, the better the attendance.

Working number

Materials and equipment for the field seminar were acquired basing on an approximate attendance of four hundred participants. The rationale of basing purchase of materials to four hundred people was arrived at following the experience of the first field seminar held at Mutomo and the sparse population of the area. Although the attendance turned out to be so big, this however did not affect the adequacy of materials.

Arrangement Itinerary

The table below summarizes contact between seminar organizers and site personnel with regard to arrangements for the on-field seminar.

Time Schedule for Field Seminar arrangement 1994

DAYS

DATE	REMAINING	ITEM	CONTENTS
26th Jan 1994	30 days	First contact to Katse	Meeting with Kyuso Divisional Forest Officer, Katse locational chief, Katse Locational Social Services Office, Katse locational Agriculture Officer, for On-field Seminar announcement and site identification.
1st Feb	23	Site confirmation	MOPW Ground Katse
8th Feb	16	Posters	Hand over of Posters for distribution to Kyuso & Katse by those in (i) above.
9th Feb	15	Discussion between Organizers and Presenters	<ol style="list-style-type: none"> 1. Explanation on Field Seminar objectives. 2. presentation time(20 min.) 3. Each Lecture and Lecturer-scope 4. materials, 5. An overview of the experience of the 1st one and expected improvement.
15th Feb	9	Material requirement from Site	<ol style="list-style-type: none"> 1. Tables & Chairs 2. Forest Soil 3. Ash 4. Seeds 5. Water 6. Lecturer for Soil conservation 7. Labour 8. Accommodation
21st Feb	3	Last meeting at Kitui centre	<ol style="list-style-type: none"> 1. Traffic means & Allowance 2. Accommodation 3. Last check of Materials
22nd Feb	2	All presenters move to site and start preparation arrangement, and Stay over night Kyuso	<ol style="list-style-type: none"> 1. Site preparation (Cleaning) 2. Drawing map of Venue (Layout) 3. Preparation by Lecturer
23rd Feb	1	Site preparation, Display set up, and Stay over night Kyuso	<ol style="list-style-type: none"> 1. Site preparation 2. Preparation by Lecturer 3. Rehearsal
24th Feb	0	Implementation	Field day subject matter

Venue layout

As already mentioned earlier in this report, the site of the On-Field Seminar happens to fall in a very harsh environment with intense heat. Therefore shade was a very important factor in the choice of Ministry of Public works (MOPW) ground as the seminar venue. The ground has quite good shade cover from stands of Cassia siamea. The seminar sessions (presentations) were arranged under shade with logical flow of subject material under consideration. The session area was bound by ropes to direct participants through the presentation points from registration to exit. Since the participants would come continuously throughout the day, each presenter had upto 20 minutes to pass on his material, before the group moved to the next point. Please see the lay out map. Figure 2.

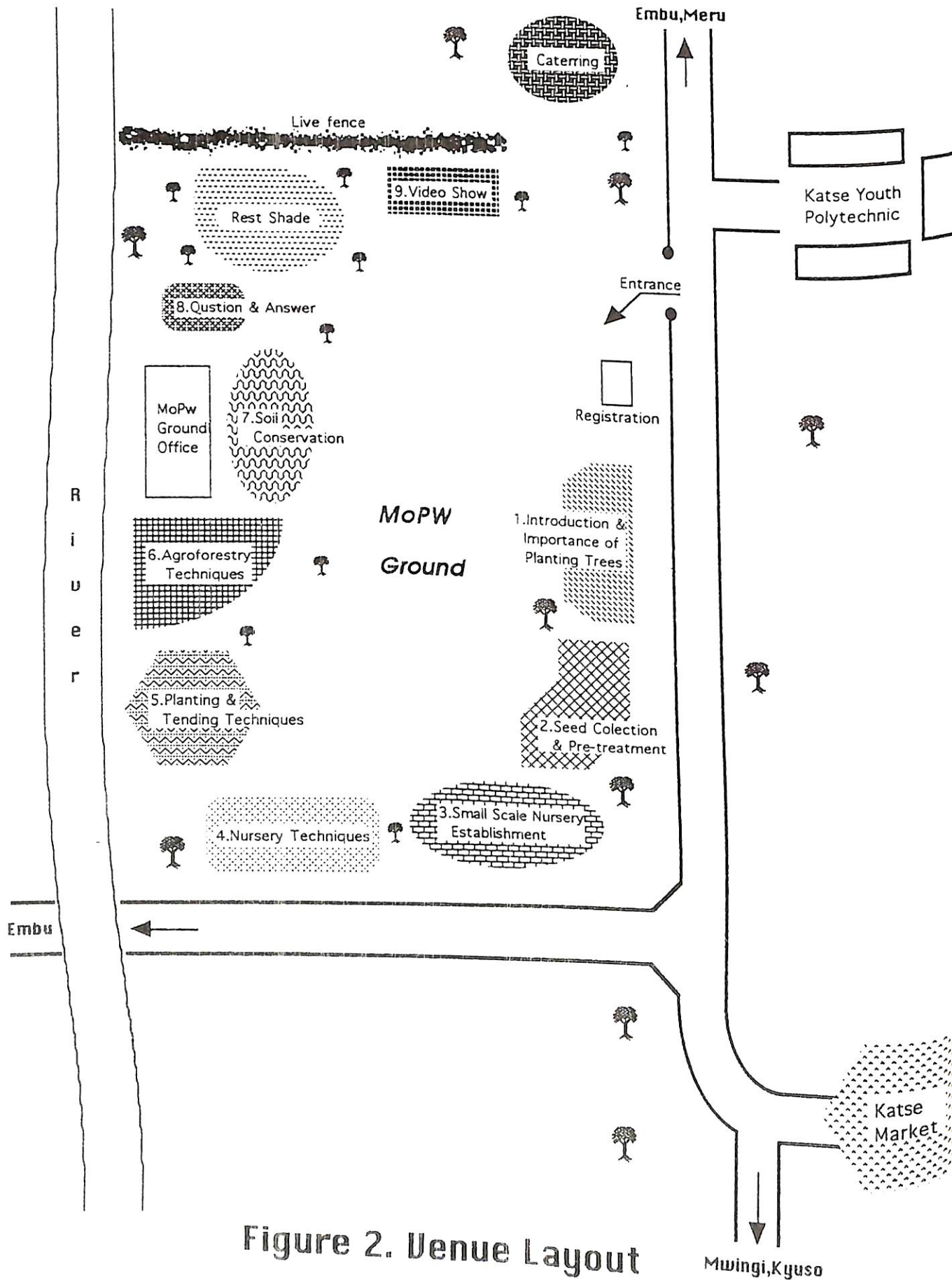


Figure 2. Venue Layout

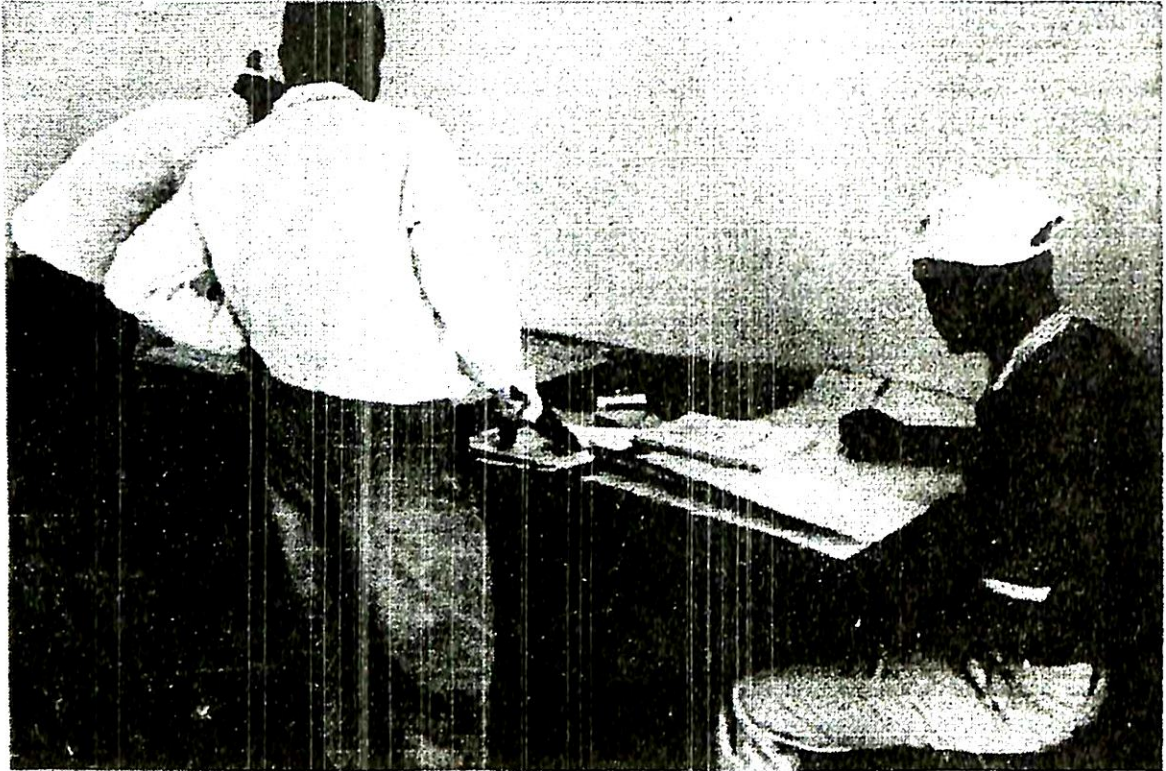
Implementation:

By 8:30 a.m. on the 24th day of Feb. 1994, all demonstrations, displays and practice materials for the day had been set. Registration exercise then begun starting with school pupils in the specially designed forms for this purpose. At 9:00 a.m, the first pool of twenty pupils went through the first session. Although this time the arrangement was that school pupils participate during morning session and farmers in the afternoon, many farmers made it during the morning, forcing the organizers to accept them in an alternating manner. Since turn-out superseded the expected, this phenomenon led to groups being expanded to as many as fifty pupils and twenty farmers per group respectively. Also because of the large crowd, presentation time was reduced from twenty minutes to fifteen minutes only per Instructor. Participants went through the sessions in the following order;

1. Registration (also pooling point)
2. Introduction (a brief overview of the activity).
3. Importance of tree-planting including useful tree species for Social Forestry development.
4. Seed collection and pre-treatment techniques.
5. Basic nursery establishment.
6. Simple nursery techniques.
7. Planting, tending and tree management techniques.
8. Agroforestry
9. Soil Conservation
10. Question and answer session
11. Video show
12. Soft drink (quencher).

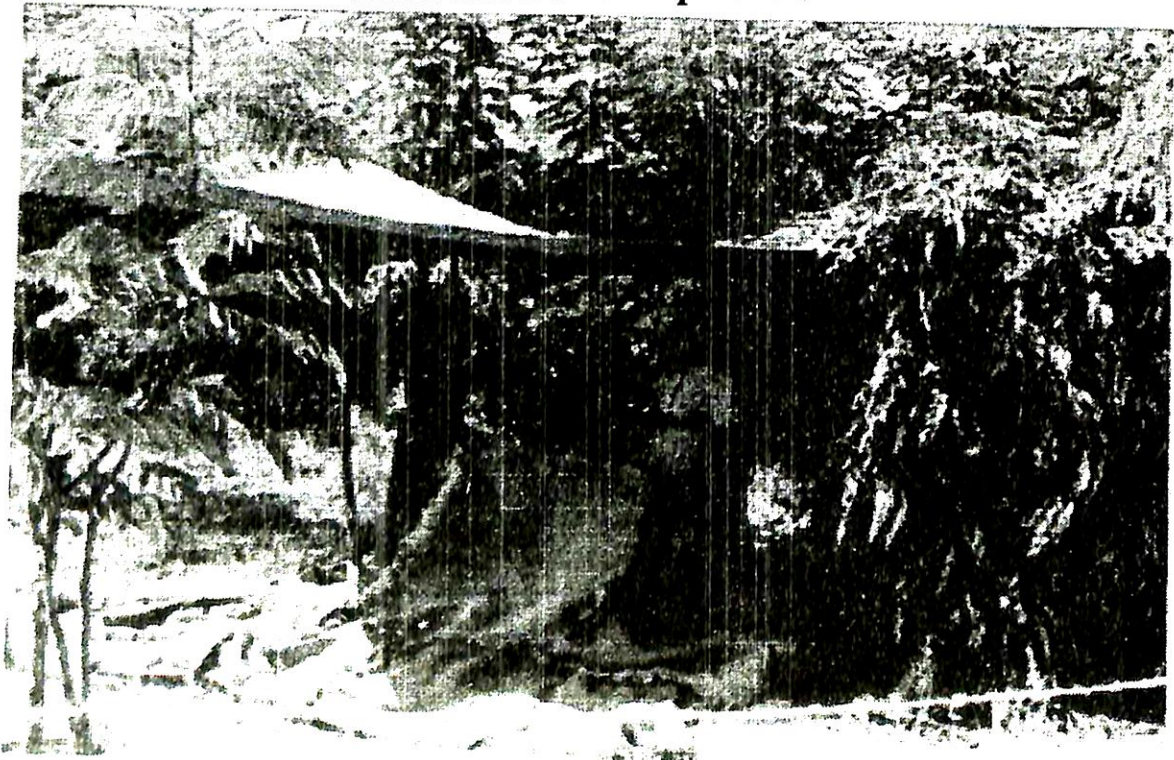
Presentation by Instructors ended at 3:30 p.m. the time of closing. The area Chief, Mr. Titus Maithya closed the event on-behalf of the D.O Kyuso. Upto closing time, a record total of 912 participants had passed through the sessions. Out of these, 631 were school pupils, 272 farmers and 9 teachers. Please see appendix II and III - Registration for farmers and schools respectively.

One bus, a pajero and a Pick-up were used to carry materials and equipments and transport Lecturers. Another two vehicles namely a mini-bus and a pick-up were also used to transport other staff involved in accessory services. See appendix IV-Equipments and materials. Names of Instructors and Organizers are shown in appendix V. Photographs of the implementation process are posted hereafter.



Preparation by Instructors

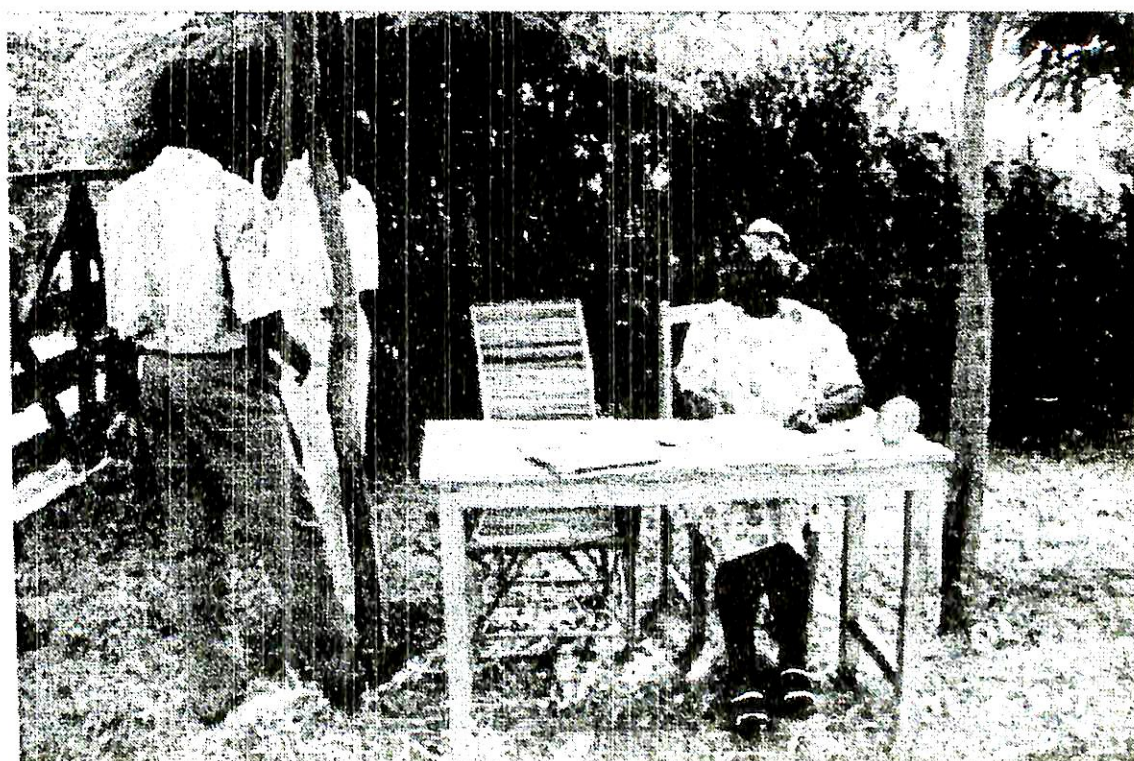
Video show site Preparations

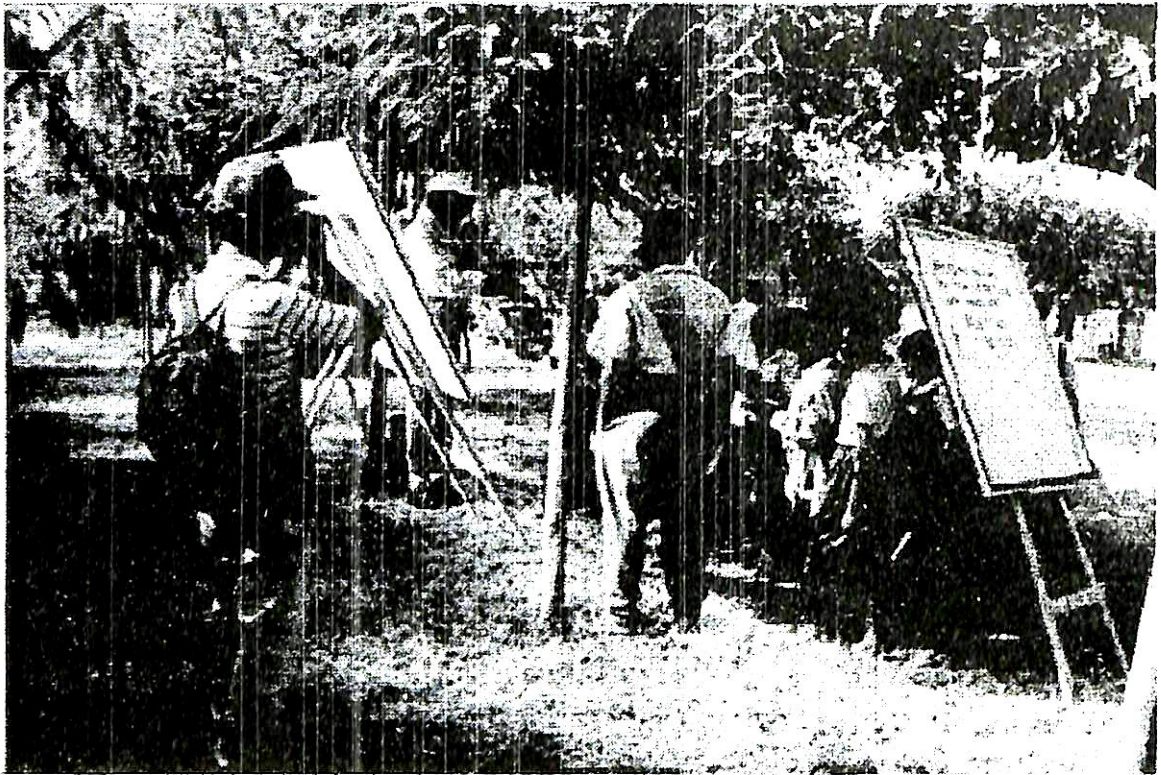




Participants arrival and registration

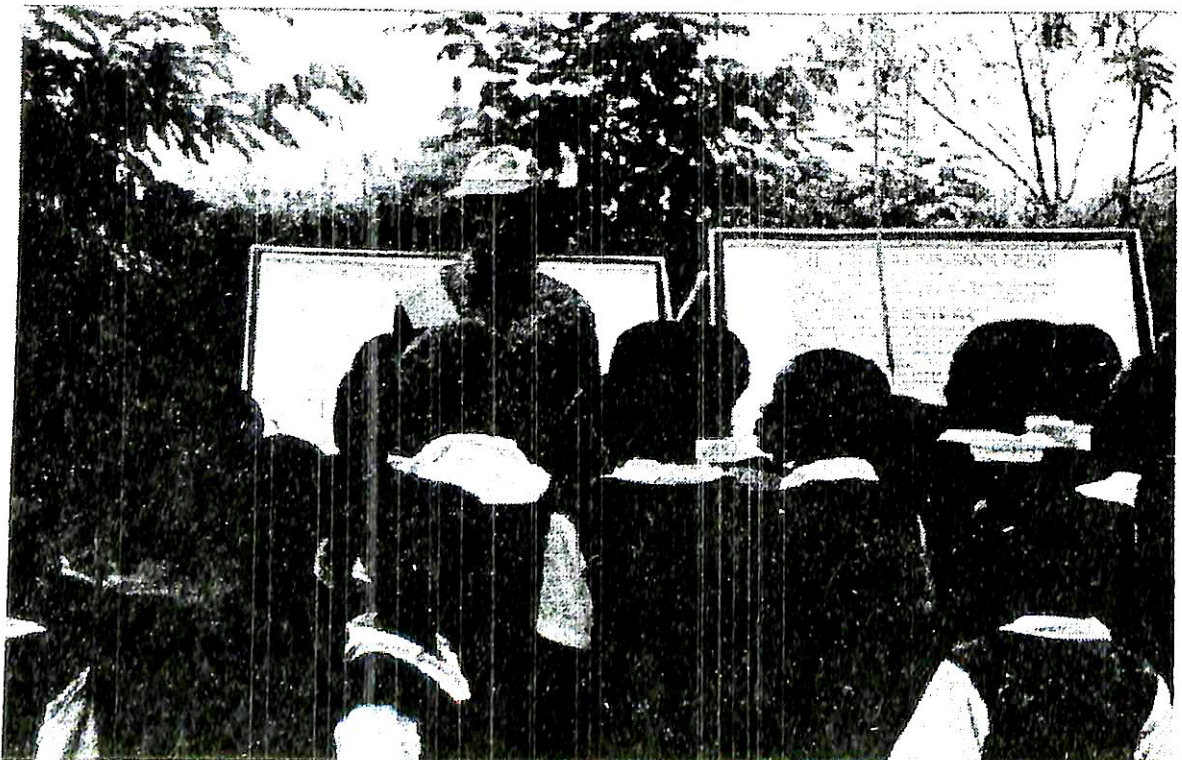
Same as above





Useful trees session

Seed collection and pre-treatment session





Small scale nursery establishment session

Nursery techniques session





Planting and Tending session

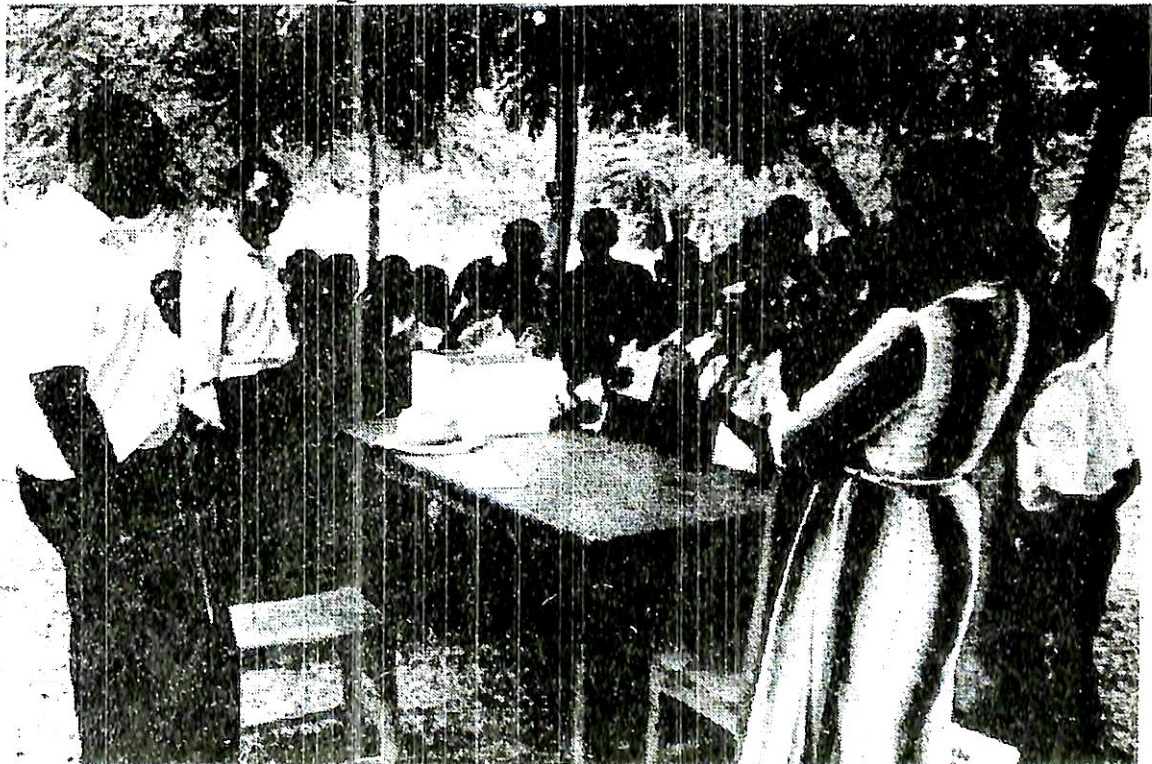
Agroforestry session

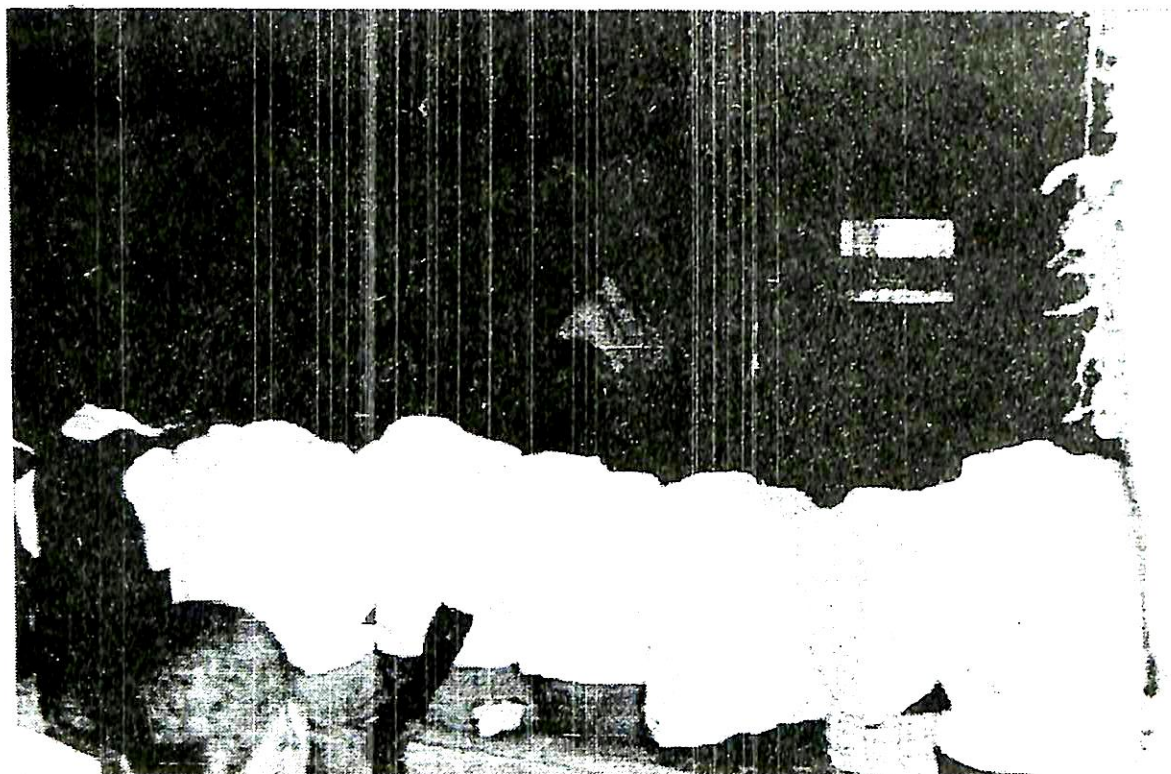




Soil Conservation Session

Question and answer session

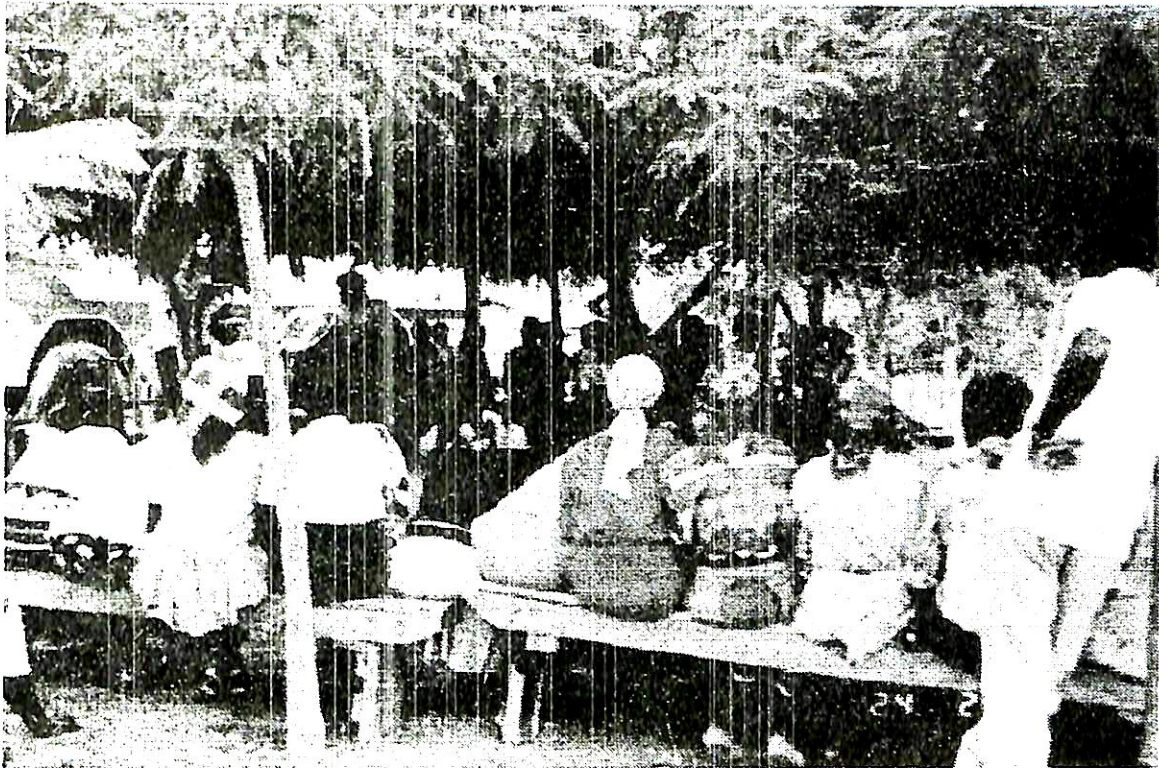




Video Show

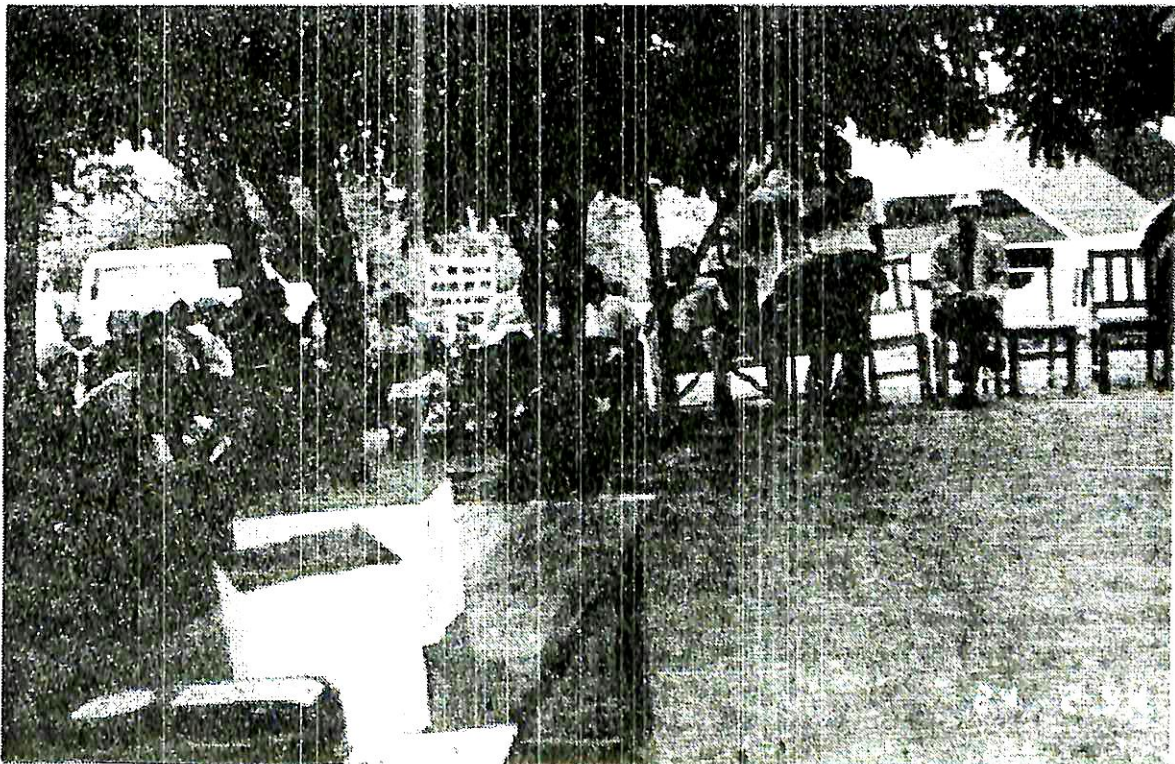
Quencher





Closing Ceremony

Closing Ceremony



From the participants' eyes.

Most of the participants especially farmers and teachers saw this activity as quite useful to them and the first one in the line of forestry they have even participated in. This observation is made even truer given that DANIDA have a nursery in the area but such an event has never been held. All participants were particularly impressed by the planting, tending and tree management techniques displayed, signifying they benefited from this one most. Given the harsh environment characteristic of their area, and the fact that seedlings are readily available from the DANIDA nursery, skills and techniques of planting and tending seemed to be most needed by them. No wonder therefore they were silent about the other subjects. However, many of the participants, school children included persistently continued asking about how they could be supplied with seeds from the Centre to start tree nurseries. When asked why they should want seeds from the centre yet they have been taught how to collect locally, they indicated that many tree species they would want are not locally available. It appeared that availability of seed is a pre-requisite for nursery establishment.

Even though, at the question and answer session, more specific questions were asked and responses made by the Project Manager, Mr. Cheboiwo, Training Officer, Mr. Muniafu and Training Expert, Mr. Kubo. Such questions and answers are as follows:

Farmers

- Q1. Will an activity like this be held again here or this is the last one?
- (A) Since the Project would like to reach many people through such an activity, this is the last one here. Use the knowledge and skills you have gotten today to enhance your activities. Also, those interested in attending our farmers course at the training centre can apply to the Project Manager and could be invited for more ideas.
- Q2. Is there going to be any assistance from the Project following today's activity?
- A. No. But try to utilize as many of the techniques you have learned today as much as possible. Even though, assistance in form of training of some of you is possible if you apply.
- Q3. As you can see, this area has very little rain and so some tree species can survive others not. Which tree species are most appropriate here?

A. As you can also see, this Cassia siamea under which you are standing, is doing very well here. This is one of the most appropriate tree species for this area of yours. Also Melia volkensii is good for here. However, more research is going on to find out more tree species appropriate for such a place like yours, and your local forester could communicate to you.

Q4. I have seen an indigenous tree species called "Muteta" at session number three (i.e. importance of tree species for Social Forestry). How can a farmer here get it from your nursery?

(A) Given the distance, it is not feasible for you to get it from our nursery. However you can contact your local forester for it.

*Q5. Can you post seeds to a farmer from your Centre?

(A) No. It is expensive. Also we have taught you local collection methods, so collect locally. The local forester can help you get seeds of tree species not in your area.

Q6. What is the procedure for coming for training at your Centre?

A. Nomination by DAO hence through your local agriculture officer or DFO through your local forester. Alternatively, write direct to the Project Manager.

Q7. Occasionally trees we plant are attacked by diseases, how can we go about it?

A) Plant resistant tree species and also use local concoctions. Chemicals are expensive.

*Q8. I have a stony shamba, how can it be made productive for crops and trees?

A) Put manure and plant shallow rooted trees, this will gradually improve the soil structure.

NB: * Means question also asked by school pupils.

Schools

Q1. Can a row seed grow?

A. Yes, but if and only if it is physiologically mature.

Q2. Some tree seeds need pre-treatments, why?

A. To activate their metabolism to germinate.

Q3. Water is a problem in this area, how can we get water?

A. That is out of our scope, Ministry of water, Action-aid among others, could address this issue.

Q4. Can wildings be planted?

A. Yes, they are quite a good source of seedlings. But uproot them with care. Don't cut roots or they die. Water before uprooting and also after planting.

Outstanding issues and recommendations

1. The understanding that many agents be involved in the publicity exercise worked out excellently. This time round, forest, Agriculture and Social services officers, chiefs, assistant chiefs participated in the diffusion process. The results were a **record** 912 participants. Many more agents could even be used next time like church leaders, other projects in the area e.t.c.
2. Fatigue accruing from presentation by one Instructor was absent. Two instructors per subject worked out so well since instructors could relieve one another alternatively. This state of affairs could be maintained next time.
3. The soil and water conservation topic was not handled well perhaps because the instructors were locals and could not perceive the activity from our perspective even after some guidance was offered. Next time a local Instructor, should always present alongside a Project Instructor, like in the case of session 3. (Nguniko and Maina).
4. The Poster was well improved since this time, the objective or purpose of the Seminar was included. This should become a permanent feature of future publications.
5. In an area with other Projects like DANIDA e.t.c. the title Kenya/Japan Social Forestry Training Project may not be as catching as KEFRI/JICA Social Forestry training Project. Adopt the later in future. KEFRI/JICA is quite out-standing.
6. A banner still lacked at this 2nd On-Field Seminar. Early arrangements for it could be made in future.
7. This activity is very useful, you reach many people with site relevant forestry knowledge in a short time, using limited resources. Its frequency can therefore be increased.
8. Many of our Instructors scaled down their materials to basics and increased demonstrations and practice but still 10 minutes presentation time is quite inadequate for the always inquisitive farmers. An analysis of the situation followed by adequate adjustments on Site should always be done from time to time.

9. Since turn-out seems to be difficult to predict, working number (expected no. of participants) especially for the quencher could be increased from the current (400) to say an average of $\frac{(912 + 288)}{2} = 600$

i.e. Quencher purchased should approximately cater for 600 people at the least.

10. The involvement of the catering section from the Centre to prepare food at the Site was quite appropriate. It was convenient, smooth and quite economical. Thus should be encouraged.

**Siku ya Kukutana
kwa
Upandaji wa Miti
kwani**



Tarehe: 24/2/1994

Saa: Wakati Wote Kuanzia Saa
Mbili Mpaka Saa Tisa Na Nusu

Mahali: MoPW Ground (Katse mtaa)

Ministry of Public Works

Kitui Regional Training Centre

APPENDIX II. REGISTRATION OF (FARMERS)

NO	TIME	NAME	AGE	P.O BOX	LOCATION	DIVISION	SIGNATURE
1	9:20 a.m.	Mr. B. Inguna	62	P.O Katse	Katse	Kyuso	
2	9:25 a.m.	Mr. J. Kilai	37	P.O Katse	Katse	Kyuso	
3	10:20 a.m.	Mr. Mutinda Mwinzi	25	P.O Katse	Katse	Kyuso	
4	10:20 a.m.	Mr. Kilonzi Kitheka	25	P.O Katse	Katse	Kyuso	
5	11:20 a.m.	Mrs. Ruth Mulonzya	30	P.O Katse	Katse	Kyuso	
6	10:20 a.m.	Mr. Maluki Mwangangi	30	P.O Katse	Katse	Kyuso	
7	10:20 a.m.	Mrs. Kalyoki Kimwele	55	P.O Katse	Katse	Kyuso	
8	10:20 a.m.	Mrs. Kalunda Ing'oi	40	P.O Katse	Katse	Kyuso	
9	10:20 a.m.	Mr. Peter M. Mwilu	35	P.O Katse	Katse	Kyuso	
10	10:20 a.m.	Mr. Musili Mathuku	45	P.O Katse	Katse	Kyuso	
11	10:20 a.m.	Mr. Musya Kimwele	31	P.O Katse	Katse	Kyuso	
12	10:20 a.m.	Mr. Mutua Mutava	38	P.O Katse	Katse	Kyuso	
13	10:20 a.m.	Mrs. Kayumya Mwendwa	45	P.O Katse	Katse	Kyuso	
14	10:20 a.m.	Mrs. Mutei Kasinga	45	P.O Katse	Katse	Kyuso	
15	10:20 a.m.	Mrs. Martha Musyoka	23	P.O Katse	Katse	Kyuso	
16	10:20 a.m.	Mrs. Mumbi Kitambaa	45	P.O Katse	Katse	Kyuso	
17	10:20 a.m.	Mrs. Mary Malonza	38	P.O Katse	Katse	Kyuso	
18	10:20 a.m.	Mr. Wambua Muindi	61	P.O Katse	Katse	Kyuso	
19	10:20 a.m.	Mr. Kilonzo Nguu	30	P.O Katse	Katse	Kyuso	
20	10:20 a.m.	Mr. Nzoka Maithya	32	P.O Katse	Katse	Kyuso	
21	10:54 a.m.	Mr. Mutemi Nguu	32	P.O Katse	Katse	Kyuso	
22	10:55 a.m.	Mr. Mwinzi Mulonzya	57	P.O Katse	Katse	Kyuso	
23	10:56 a.m.	Mr. Mutemi Ndei	63	P.O Katse	Katse	Kyuso	
24	10:57 a.m.	Mr. Joseph Ngunga	34	P.O Katse	Katse	Kyuso	
25	10:58 a.m.	Mr. Robert Mutirya	45	P.O Katse	Katse	Kyuso	
26	10:59 a.m.	Mr. Mulalya Syanda	32	P.O Katse	Katse	Kyuso	
27	11:00 a.m.	Mr. Muisyo Mwanzau	39	P.O Katse	Katse	Kyuso	
28	11:01 a.m.	Mr. Mwanzia Kimwele	32	P.O Katse	Katse	Kyuso	
29	11:02 a.m.	Mr. Stephen Mwanzia	31	P.O Katse	Katse	Kyuso	
30	11:03 a.m.	Mr. Mumo Nzuki	56	P.O Katse	Katse	Kyuso	
31	11:04 a.m.	Mr. Mwinzi Ngonga	35	P.O Katse	Katse	Kyuso	
32	11:05 a.m.	Mr. Mati Kele	48	P.O Katse	Katse	Kyuso	
33	11:07 a.m.	Mr. Mwasya Muli	21	P.O Katse	Katse	Kyuso	
34	11:08 a.m.	Mr. Muasya Nyamai	25	P.O Katse	Katse	Kyuso	
35	11:08 a.m.	Mr. Mutuku Maithya	36	P.O Katse	Katse	Kyuso	
36	11:08 a.m.	Mr. William Musyoka	33	P.O Katse	Katse	Kyuso	
37	11:10 a.m.	Mr. Willy Kitheka	33	P.O Katse	Katse	Kyuso	
38	11:13 a.m.	Mrs. Kyambi Munyoki	55	P.O Katse	Katse	Kyuso	

39	11:14 a.m.	Mrs. Kasyoka Nzulu	58	P.O Katse	Katse	Kyuso	
40	11:15 a.m.	Mrs. Kalunda Musyimi	25	P.O Katse	Katse	Kyuso	
41	11:20 a.m.	Mr. Kisyake Muthengi	51	P.O Katse Katse Kyuso	Katse	Kyuso	
42	11:21 a.m.	Mr. Manzi Mutemi	30	P.O Katse	Katse	Kyuso	
43	11:21 a.m.	Mrs. Kalunda Mwenga	40	P.O Katse	Katse	Kyuso	
44	11:21 a.m.	Mrs. Mary Aluoch	40	P.O Katse	Katse	Kyuso	
45	11:25 a.m.	Mrs. Aphia Mumo	37	P.O Katse	Katse	Kyuso	
46	11:22 a.m.	Mrs. Mumbanu Mutemi	29	P.O Katse	Katse	Kyuso	
47	11:22 a.m.	Mr. Kithumbi Mutemi	48	P.O Katse	Katse	Kyuso	
48	11:23 a.m.	Mr. Mwanza Maluki	36	P.O Katse	Katse	Kyuso	
49	11:23 a.m.	Mr. Musya Manzi	49	P.O Katse	Katse	Kyuso	
50	11:23 a.m.	Mr. Musila Mutisya	50	P.O Katse	Katse	Kyuso	
51	11:23 a.m.	Mr. Musili Kitheka	50	P.O Katse	Katse	Kyuso	
52	11:23 a.m.	Mr. Mwanzia Kulonga	32	P.O Katse	Katse	Kyuso	
53	11:23 a.m.	Mrs. Kavive Makanda	50	P.O Katse	Katse	Kyuso	
54	11:23 a.m.	Mr. Ngari Mutemi	21	P.O Katse	Katse	Kyuso	
55	11:23 a.m.	Mr. Joseph Masuti	46	P.O Katse	Katse	Kyuso	
56	11:23 a.m.	Mr. Mwendwa Musyoka	25	P.O Katse	Katse	Kyuso	
57	11:24 a.m.	Mr. Musyoka Matei	57	P.O Katse	Katse	Kyuso	
58	11:24 a.m.	Mr. Mutua Mwanzau	45	P.O Katse	Katse	Kyuso	
59	11:24 a.m.	Mr. Mulatya Mutava	59	P.O Katse	Katse	Kyuso	
60	11:25 a.m.	Mrs. Musuni Karingo	50	P.O Katse	Katse	Kyuso	
61	11:24 a.m.	Mrs. Tavitha Kilonzo	25	P.O Katse	Katse	Kyuso	
62	11:24 a.m.	Mrs. Munanyo Maithya	40	P.O Katse	Katse	Kyuso	
63	11:25 a.m.	Mr. Muthami Sone	23	P.O Katse	Katse	Kyuso	
64	11:25 a.m.	Mr. Kilonzo Kavindu	41	P.O Katse	Katse	Kyuso	
65	11:25 a.m.	Mrs. Syovata Mwanzia	50	P.O Katse	Katse	Kyuso	
66	11:25 a.m.	Mrs. Kayumya Kimwele	30	P.O Katse	Katse	Kyuso	
67	11:25 a.m.	Mrs. Monica Kimanzi	25	P.O Katse	Katse	Kyuso	
68	11:26 a.m.	Mr. Nzau Makuu	26	P.O Katse	Katse	Kyuso	
69	11:26 a.m.	Mrs. Syoyumbi Kayanda	50	P.O Katse	Katse	Kyuso	
70	11:26 a.m.	Mrs. Katui Musili	23	P.O Katse	Katse	Kyuso	
71	11:29 a.m.	Mr. Muli Kavinge	27	P.O Katse	Katse	Kyuso	
72	11:30 a.m.	Mrs. Katui Mwanza	30	P.O Katse	Katse	Kyuso	
73	11:31 a.m.	Mrs. Kathini John	30	P.O Katse	Katse	Kyuso	
74	11:32 a.m.	Mr. Nduni Munyoki	32	P.O Katse	Katse	Kyuso	
75	11:34 a.m.	Mrs. Syombua Katee	34	P.O Katse	Katse	Kyuso	
76	11:25 a.m.	Mrs. Kithumba Tito	50	P.O Katse	Katse	Kyuso	
77	11:40 a.m.	Mrs. Musangi Syanda	24	P.O Katse	Katse	Kyuso	
78	11:41 a.m.	Mr. Mwinza Nzoka	58	P.O Katse	Katse	Kyuso	
79	11:42 a.m.	Mrs. Kathini Ndemi	25	P.O Katse	Katse	Kyuso	

80	11:43 a.m.	Mrs. Kavuu Musyoka	57	P.O Katse	Katse	Kyuso	
81	11:46 a.m.	Mrs. Mali Mwinzi	31	P.O Katse	Katse	Kyuso	
82	11:48 a.m.	Mrs. Katunge Musyoka	34	P.O Katse	Katse	Kyuso	
83	11:50 a.m.	Mr. Kituu Mukui	49	P.O Katse	Katse	Kyuso	
84	11:51 a.m.	Mrs. Ngina Kimanzi	25	P.O Katse	Katse	Kyuso	
85	11:52 a.m.	Mr. Mbuli Kimwele	30	P.O Katse	Katse	Kyuso	
86	11:55 a.m.	Mrs. Lusia Mwendwa	50	P.O Katse	Katse	Kyuso	
87	11:56 a.m.	Mr. Ngae Masya	28	P.O Katse	Katse	Kyuso	
88	11:57 a.m.	Mrs. Syondeta Kilungi	49	P.O Katse	Katse	Kyuso	
89	11:57 a.m.	Mr. Ikore Mailu	29	P.O Katse	Katse	Kyuso	
90	11:58 a.m.	Mr. Mwinza Mukiti	50	P.O Katse	Katse	Kyuso	
91	11:58 a.m.	Mr. Joseph Mulatya	62	P.O Katse	Katse	Kyuso	
92	11:59 a.m.	Mrs. Mwendu Muema	48	P.O Katse	Katse	Kyuso	
93	11:59 a.m.	Mr. Kithumba Muthui	29	P.O Katse	Katse	Kyuso	
94	12:00 p.m.	Mr. Mwendwa Musyoka	35	P.O Katse	Katse	Kyuso	
95	12:01 p.m.	Mr. Kyambi Mutunga	40	P.O Katse	Katse	Kyuso	
96	12:03 p.m.	Mr. Mukiti Musee	31	P.O Katse	Katse	Kyuso	
97	12:05 p.m.	Mr. Mutava Mukiwewe	63	P.O Katse	Katse	Kyuso	
98	12:07 p.m.	Mr. Musili Mulonzya	35	P.O Katse	Katse	Kyuso	
99	12:06 p.m.	Mr. Muthasye Maithya	30	P.O Katse	Katse	Kyuso	
100	12:09 p.m.	Mr. Ngali Kathuru	29	P.O Katse Katse	Katse	Kyuso	
101	12:10 p.m.	Mr. Mwinza Mutia	34	P.O Katse	Katse	Kyuso	
102	12:11 p.m.	Mr. Kasembi Muniithya	50	P.O Katse	Katse	Kyuso	
103	12:11 p.m.	Mrs. Mutindi Muliwa	36	P.O Katse	Katse	Kyuso	
104	12:11 p.m.	Mr. Mutongoi Mati	60	P.O. Kaste	Kaste	Kyuso	
105	12:11 p.m.	Mrs. Rodah Kalonzye	35	P.O Katse	Katse	Kyuso	
106	12:10 p.m.	Mr. Mbithi Kilonzo	33	P.O Katse	Katse	Kyuso	
107	12:10 p.m.	Mrs. Martha Muthui	38	P.O Katse	Katse	Kyuso	
108	12:10 p.m.	Mr. Mbuli Kiendwa	26	P.O Katse	Katse	Kyuso	
109	12:15 p.m.	Mrs. Veronica Matuku	37	P.O Katse	Katse	Kyuso	
110	12:15 p.m.	Mrs. Esther Karinithi	48	P.O Katse	Katse	Kyuso	
111	12:15 p.m.	Mrs. Esther Mwangangi	25	P.O Katse	Katse	Kyuso	
112	12:15 p.m.	Mrs. Muthakye Mutie	18	P.O Katse	Katse	Kyuso	
113	12:15 p.m.	Mrs. Beatrice Musyoki	45	P.O Kaste	Katse	Kyuso	
114	12:16 p.m.	Mr. Daniel Nzoka	22	P.O Katse	Katse	Kyuso	
115	12:20 p.m.	Mrs. Ruth Timothy	32	P.O Katse	Katse	Kyuso	
116	12:20 p.m.	Mrs. Margaret Musyoka	47	P.O Katse	Katse	Kyuso	
117	12:20 p.m.	Mrs. Kalunda Muneno	32	P.O Katse	Katse	Kyuso	
118	12:20 p.m.	Mr. Musyoka Muniithya	40	P.O Katse	Katse	Kyuso	
119	12:24 p.m.	Mr. Kakundi Kitengu	42	P.O Katse	Katse	Kyuso	
120	12:24 p.m.	Mr. David Kimolo	35	P.O Katse	Katse	Kyuso	

121	12:25 p.m.	Mrs. Teresiah	25	P.O Katse	Katse	Kyuso	
122	12:25 p.m.	Mr. Josephat Mukiti	25	P.O Katse	Katse	Kyuso	
123	12:26 p.m.	Mrs. Jane Muema	23	P.O Katse	Katse	Kyuso	
124	12:26 p.m.	Mrs. Kalunda Musyoka	28	P.O Katse	Katse	Kyuso	
125	12:26 p.m.	Mr. Muthui Ithame	44	P.O Katse	Katse	Kyuso	
126	12:26 p.m.	Mr. Kiilu Kisyang'a	45	P.O Katse	Katse	Kyuso	
127	12:30 p.m.	Mrs. Ndululu Mwandikwa	35	P.O Katse	Katse	Kyuso	
128	12:30 p.m.	Mr. Mutui Kiteme	45	P.O Katse	Katse	Kyuso	
129	12:30 p.m.	Mr. Mutuoki Musyoka	40	P.O Katse	Katse	Kyuso	
130	12:30 p.m.	Miss. Nduni Moto	19	P.O Katse	Katse	Kyuso	
131	12:31 p.m.	Mrs. Syomawa Musyoka	20	P.O Katse	Katse	Kyuso	
132	12:32 p.m.	Mrs. Martha Munyoki	10	P.O Katse	Katse	Kyuso	
133	12:32 p.m.	Mrs. Loise Munzi	60	P.O Katse	Katse	Kyuso	
134	12:32 p.m.	Mrs. Joyce Muthui	32	P.O Katse	Katse	Kyuso	
135	12:35 p.m.	Mrs. Kyavia Musyoka	22	P.O Katse	Katse	Kyuso	
136	12:33 p.m.	Mrs. Beatrice Kitheka	40	P.O Katse	Katse	Kyuso	
137	12:34 p.m.	Mr. Mwandaka Munyasya	75	P.O Katse	Katse	Kyuso	
138	12:34 p.m.	Mwinzi Musili	45	P.O Katse	Katse	Kyuso	
139	12:34 p.m.	Mr. Wesyoka Mutisya	45	P.O Katse	Katse	Kyuso	
140	12:35 p.m.	Mr. Mukethi Mutambu	75	P.O Katse	Katse	Kyuso	
141	12:35 p.m.	Mrs. Kavisa Muthini	30	P.O Katse	Katse	Kyuso	
142	12:35 p.m.	Mrs. Nduni Ndolo	31	P.O Katse	Katse	Kyuso	
143	12:36 p.m.	Mrs. Rose Mukiti	45	P.O Katse	Katse	Kyuso	
144	12:36 p.m.	Mr. Kang'eva Mutemi	39	P.O Katse	Katse	Kyuso	
145	12:36 p.m.	Miss. Agness Maithya	22	P.O Katse	Katse	Kyuso	
146	12:36 p.m.	Miss. Francisca Musunza	20	P.O Katse	Katse	Kyuso	
147	12:37 p.m.	Mr. Robert K. Mutisya	41	P.O Katse	Katse	Kyuso	
148	12:38 p.m.	Mr. Nzoka Muthengi	69	P.O Katse	Katse	Kyuso	
149	12:38 p.m.	Mr. Musyoki Nzai	60	P.O Katse	Katse	Kyuso	
150	12:39 p.m.	Mrs. Kalunda Mwendwa	28	P.O Katse	Katse	Kyuso	
151	12:39 p.m.	Mrs. Ndunyi Katua	36	P.O Katse	Katse	Kyuao	
152	12:39 p.m.	Mrs. Josphine Kiluti	31	P.O Katse	Katse	Kyuso	
153	12:40 p.m.	Mrs. Mwinza Mutemi	40	P.O Katse	Katse	Kyuso	
154	12:41 p.m.	Mr. Mulili Simion	23	P.O Katse	Katse	Kyuso	
155	12:42 p.m.	Mrs. Ndanavi Mwendwa	28	P.O Katse	Katse	Kyuso	
156	12:43 p.m.	Mrs. Rodah Kinyao	32	P.O Katse	Katse	Kyuso	
157	12:44 p.m.	Mrs. Mwisura Kamuti	35	P.O Katse	Katse	Kyuso	
158	12:45 p.m.	Mrs. Nzisa Mawiu	50	P.O Katse	Katse	Kyuso	
159	12:46 p.m.	Mrs. Kimala Kilengu	50	P.O Katse	Katse	Kyuso	
160	12:47 p.m.	Mrs. Josephine Muthui	46	P.O Katse	Katse	Kyuso	
161	12:48 p.m.	Mrs. Mali Numba	50	P.O Katse	Katse	Kyuso	

162	12:48 p.m.	Mr. Muoki Mutinda	35	P.O Katse	Katse	Kyuso	
163	12:49 p.m.	Mrs. Mbuli Manza	50	P.O Katse	Katse	Kyuso	
164	12:49 p.m.	Mr. Joseph Mutia	31	P.O Katse	Katse	Kyuso	
165	12:50 p.m.	Miss. Mbuu Mutua	20	P.O Katse	Katse	Kyuso	
166	12:51 p.m.	Mr. Munyithya Nzelu	37	P.O Katse	Katse	Kyuso	
167	12:51 p.m.	Mr. Joel Muingui	57	P.O Katse	Katse	Kyuso	
168	12:52 p.m.	Miss. Alice Mwendwa	20	P.O Katse	Katse	Kyuso	
169	12:53 p.m.	Mr. Musili Kyonzu	30	P.O Katse	Katse	Kyuso	
170	12:54 p.m.	Mrs. Ngolanya Ngao	60	P.O Katse	Katse	Kyuso	
171	12:55 p.m.	Mrs. Mwikali Mvengei	14	P.O Katse	Katse	Kyuso	
172	12:56 p.m.	Mr. Daniel Mwendaka	28	P.O Katse	Katse	Kyuso	
173	12:57 p.m.	Mr. David Mwanzina	26	P.O Katse	Katse	Kyuso	
174	12:58 p.m.	Mr. Kimunyu Munyithya	40	P.O Katse	Katse	Kyuso	
175	12:59 p.m.	Mr. Charles Kimweli	25	P.O Katse	Katse	Kyuso	
176	12:59 p.m.	Mr. Samuel Musyoka	30	P.O Katse	Katse	Kyuso	
177	12:59 p.m.	Mr. Munyoki Kimwele	20	P.O Katse	Katse	Kyuso	
178	1:00 p.m.	Mrs. Kaiyu Willy	39	P.O Katse	Katse	Kyuso	
179	1:01 p.m.	Mrs. Mueni Mutia	19	P.O Katse	Katse	Kyuso	
180	1:02 p.m.	Mr. Kilonzi Miri	25	P.O Katse	Katse	Kyuso	
181	1:03 p.m.	Mr. Maundu Mulonza	62	P.O Katse	Katse	Kyuso	
182	1:04 p.m.	Mr. Peter Muliwa	22	P.O Katse	Katse	Kyuso	
183	1:05 p.m.	Mr. Munyoki Mutunga	23	P.O Katse	Katse	Kyuso	
184	1:06 p.m.	Mr. Kitheka Karimba	72	P.O Katse	Katse	Kyuso	
185	1:07 p.m.	Mr. Musyoka Musandi	42	P.O Katse	Katse	Kyuso	
186	1:08 p.m.	Mrs. Ngina Munyithya	19	P.O Katse	Katse	Kyuso	
187	1:09 p.m.	Mrs. Kailu Mbuvi	26	P.O Katse	Katse	Kyuso	
188	1:10 p.m.	Mrs. Ndanu Nzuki	20	P.O Katse	Katse	Kyuso	
189	1:11 p.m.	Mrs. Mwikali Munyoki	29	P.O Katse	Katse	Kyuso	
190	1:12 p.m.	Mr. Mwinzi Nzungu	56	P.O Katse	Katse	Kyuso	
191	1:13 p.m.	Mrs. Martha Mwangangi	25	P.O Katse	Katse	Kyuso	
192	1:14 p.m.	Mrs. Reginah Muthengi	29	P.O Katse	Katse	Kyuso	
193	1:15 p.m.	Mrs. Nzangi Muthambu	21	P.O Katse	Katse	Kyuso	
194	1:16 p.m.	Miss. Mueni Nzambi	21	P.O Katse	Katse	Kyuso	
195	1:17 p.m.	Mrs. Mumba David	23	P.O Katse	Katse	Kyuso	
196	1:18 p.m.	Mrs. Tavitha Muthui	22	P.O Katse	Katse	Kyuso	
197	1:19 p.m.	Mr. Muli Manzi	23	P.O Katse	Katse	Kyuso	
198	1:20 p.m.	Mr. Mutemi Itari	55	P.O Katse	Katse	Kyuso	
199	1:21 p.m.	Mr. Karimi Mukiti	28	P.O Katse	Katse	Kyuso	
200	1:22 p.m.	Mrs. Esther Mumo	25	P.O Katse	Katse	Kyuso	
201	1:23 p.m.	Mrs. Monica Mutemi	31	P.O Katse	Katse	Kyuso	

202	1:23 p.m.	Mrs. Wanjiku Musyoka	26	P.O Katse	Katse	Kyuso	
203	1:23 p.m.	Mrs. Joyce Mutemi	40	P.O Katse	Katse	Kyuso	
204	1:25 p.m.	Mrs. Kasembi Muthui	31	P.O Katse	Katse	Kyuso	
205	1:23 p.m.	Mrs. Mueni Muthui	17	P.O Katse	Katse	Kyuso	
206	1:24 p.m.	Mrs. Mwendu Kiteme	35	P.O Katse	Katse	Kyuso	
207	1:24 p.m.	Mrs. Mbuu Mutua	29	P.O Katse	Katse	Kyuso	
208	1:34 p.m.	Mr. B.K. Kinandu	69	P.O Katse	Katse	Kyuso	
209	1:31 p.m.	Mr. Muthanga Kalonzya	49	P.O Katse	Katse	Kyuso	
210	1:52 p.m.	Mr. Muli Maluki	50	P.O Katse	Katse	Kyuso	
211	1:35 p.m.	Mrs. Mary Munyithya	31	P.O Katse	Katse	Kyuso	
212	1:34 p.m.	Mrs. Kailu Kilonzo	22	P.O Katse	Katse	Kyuso	
213	1:35 p.m.	Mrs. Pauline Ngina	30	P.O Katse	Katse	Kyuso	
214	1:36 p.m.	Mrs. Kasembi Paul	23	P.O Katse	Katse	Kyuso	
215	1:37 p.m.	Mrs. Mwendu Manzi	20	P.O Katse	Katse	Kyuso	
216	1:39 p.m.	Mrs. Syomawa Munyithya	25	P.O Katse	Katse	Kyuso	
217	1:39 p.m.	Mr. Gedion Mwinzi	32	P.O Katse	Katse	Kyuso	
218	1:39 p.m.	Mr. Paul Kilonzo	33	P.O Katse	Katse	Kyuso	
219	1:30 p.m.	Mrs. Racheal Peter	30	P.O Katse	Katse	Kyuso	
220	1:31 p.m.	Mrs. Mwimbi Kaleli	35	P.O Katse	Katse	Kyuso	
221	1:32 p.m.	Mrs. Mwinza Muneeni	35	P.O Katse	Katse	Kyuso	
222	1:36 p.m.	Mrs. Mwikali Mutua	25	P.O Katse	Katse	Kyuso	
223	1:35 p.m.	Mrs. Kanini Peter	19	P.O Katse	Katse	Kyuso	
224	1:38 p.m.	Mrs. Kyambi Muasya	42	P.O Katse	Katse	Kyuso	
225	1:39 p.m.	Mrs. Toto Kunga	30	P.O Katse	Katse	Kyuso	
226	1:40 p.m.	Mr. Musyoka Kyelanzi	35	P.O Katse	Katse	Kyuso	
227	1:45 p.m.	Mrs. Muthoni Muthengi	35	P.O Katse	Katse	Kyuso	
228	1:45 p.m.	Mrs. Mawia Muthengi	42	P.O Katse	Katse	Kyuso	
229	1:46 p.m.	Mr. Muli Mwangangi	30	P.O Katse	Katse	Kyuso	
230	1:50 p.m.	Mrs. Syondeta Mutua	28	P.O Katse	Katse	Kyuso	
231	1:51 p.m.	Mrs. Mutua Musyoki	32	P.O Katse	Katse	Kyuso	
232	1:52 p.m.	Mrs. Mbuli Kimwele	40	P.O Katse	Katse	Kyuso	
233	1:53 p.m.	Mrs. Rose Kimwele	40	P.O Kaste	Katse	Kyuso	
234	1:55 p.m.	Mrs. Kaawa Kimarai	30	P.O Katse	Katse	Kyuso	
235	1:56 p.m.	Mrs. Tavitha Mui	40	P.O Katse	Katse	Kyuso	
236	1:57 p.m.	Mrs. Mali Mwinzi	40	P.O Katse	Katse	Kyuso	
237	2:05 p.m.	Mr. Peter Kisyokeyi	59	P.O Katse	Katse	Kyuso	
238	2:06 p.m.	Mr. Mutua Kirya	36	P.O Katse	Katse	Kyuso	
239	2:10 p.m.	Mrs. Mwendu Syanda	34	P.O Katse	Katse	Kyuso	
240	2:11 p.m.	Mrs. Ndanu Muasya	22	P.O Katse	Katse	Kyuso	
241	2:12 p.m.	Mrs. Sele Kimwele	45	P.O Katse	Katse	Kyuso	
242	2:13 p.m.	Mr. Mwendu Muthengi	34	P.O Katse	Katse	Kyuso	

243	2:17 p.m.	Mr. Muthui Kavive	49	P.O Katse	Katse	Kyuso	
244	2:18 p.m.	Mrs. Ngina Syengo	21	P.O Katse	Katse	Kyuso	
245	2:19 p.m.	Mr. Mutinda Mati	20	P.O Katse	Katse	Kyuso	
246	2:20 p.m.	Mr. Muthui Maluki	30	P.O Katse	Katse	Kyuso	
247	2:21 p.m.	Mrs. Syomiti Mutemi	32	P.O Katse	Katse	Kyuso	
248	2:22 p.m.	Mrs. Katui Kimwele	35	P.O Katse	Katse	Kyuso	
249	2:23 p.m.	Mr. Kyambi Kalonzo	48	P.O Katse	Katse	Kyuso	
250	2:25 p.m.	Mrs. Margret Musya	20	P.O Katse	Katse	Kyuso	
251	2:27 p.m.	Mr. Muema Mutemi	35	P.O Katse	Katse	Kyuso	
252	2:28 p.m.	Mrs. Kyambi Kalonzo	41	P.O Katse	Katse	Kyuso	
253	2:30 p.m.	Mr. Jimmy Mulyungi	39	P.O Katse	Katse	Kyuso	
254	2:31 p.m.	Mrs. Annah Titus	39	P.O Katse	Katse	Kyuso	
255	2:32 p.m.	Mr. Japeth Kasau	53	P.O Katse	Katse	Kyuso	
256	2:35 p.m.	Mr. David Kimanzi	22	P.O Katse	Katse	Kyuso	
257	2:26 p.m.	Mr. C.M. Sila	28	P.O Katse	Katse	Kyuso	
258	2:40 p.m.	Mr. Mutava Nzana	46	P.O Katse	Katse	Kyuso	
259	2:41 p.m.	Mr. Muthui King'a	32	P.O Katse	Katse	Kyuso	
260	2:50 p.m.	Simba Mbundu	51	P.O Katse	Katse	Kyuso	
261	2:53 p.m.	Mrs. Muthakye Syanda	35	P.O Katse	Katse	Kyuso	
262	2:55 p.m.	Mr. Julius Kivulai	41	P.O Katse	Katse	Kyuso	
263	3:12 p.m.	Mr. Kimwele Muthinzi	59	P.O Katse	Katse	Kyuso	
264	3:13 p.m.	Mr. Mulyungi Maithya	50	P.O Katse	Katse	Kyuso	
265	3:15 p.m.	Mr. Katua Numba	22	P.O Katse	Katse	Kyuso	
266	3:16 p.m.	Mr. Kiringa Ng'ang'a	18	Ishara	Iryambiti	Ishara	
267	3:19 p.m.	Mr. Mwinzi Karamba	35	P.O Katse	Katse	Kyuso	
268	3:20 p.m.	Miss. Ngina Kathuru	35	P.O Katse	Katse	Kyuso	
269	3:22 p.m.	Miss. Ngina Mutemi	28	P.O Katse	Katse	Kyuso	
270	3:23 p.m.	Miss. Ndusya Mutio	45	P.O Katse	Katse	Kyuso	
271	3:26 p.m.	Mr. Mutunga Mwikya	59	P.O Katse	Katse	Kyuso	
272	3:35 p.m.	Mrs. Kimala Kaviru	39	P.O Katse	Katse	Kyuso	

APPENDIX III. REGISTRATION OF (SCHOOLS)

NO.	TIME	NAME OF TEACHER	AGE	NO.OF PUPILS	P.O BOX	SCHOOL NAME	LOCATION	DIVISION	SIGNATURE
1	9:00 a.m.	Samuel Musyoka	35	285	Kyuso	Ndathani	Kyuso	Kyuso	
2	9:10 a.m.	Gabriel Muthuvi	34	297	P.O Katse	Katse	Katse	Kyuso	
3	10:25 a.m.	Robert Maluki	52	92	P.O Katse	Kamathiitu	Katse	Kyuso	
4	11:00 a.m.	Muthengi Kiteme	34		P.O Katse	Syomukei	Katse	Kyuso	
5	11:02 a.m.	Paul Kinandu	52	56	P.O Katse	Muinge	Katse	Kyuso	
6	11:20 a.m.	Mutinda Mwilu	36	52	P.O Katse	Mbarani	Katse	Kyuso	
7	11:45 a.m.	John Tumbo	34	106	P.O Katse	Kanziwa	Katse	Kyuso	
8	1:40 p.m.	Joseph Numba	40		P.O Katse	Kamathiitu	Katse	Kyuso	
9	1:50 p.m.	David Kitheka	36		P.O Katse	Kanyungu	Katse	Kyuso	

Appendix IV List of equipment and materials

Item	Quantity	Unity	Source	Description
Ropes	120	Meters	Centre	Enclosure
Posts	15		Site	Enclosure
Banner				Not prepared
Shoulder belt	10		Centre	Instructor identifiers
Registration form (farmers)	40	Paper	Centre	Registration
Registration Form (Schools)	5	Paper	Centre	Registration
Stamper	1		Site	Thumbmark
Clock	1		Centre	Registration
Label Boards	8		Centre	Registration
Mounting Tables	4		Site	Site Identification
Benches	5		Site	
Manila papers	30		Centre	
Markers	20		Centre	invarious colours
Display Boards	10		Centre	120 cm x 120 cm
Stands for above	10		Centre	Hight 90cm
Flip charts boards	2		Centre	60cm x 90cm
Flip charts stands	2		Centre	Hight 90 cm
Indicating poles	8		site	Kilawa (Glewia bicolor)
Usefui tree samples	10		Centre	On board
Medicinal samples	10		Centre	On board
Chart of Tree Uses	1		Centre	From Textbook
Seed samples	6	Species	Centre	Demonstration
Seed Samples Board	15	Species	Centre	Display
Scateur	1		Centre	Seed Pre-treatment
Plastic sheets	2		Centre	Seed Collection
Portable ladder	1		Centre	Seed Collection
Hooked pole	1		Centre	Seed Collection
Rope	1		Centre	Seed Collection
Small Cloth Bag	1		Centre	Seed Collection
Pestle	1		Centre	Seed Extruction
Mortar	1		Centre	Seed Extruction
Tins Cans	4		Centre	Seed Containers
Seed Lebls	4		Centre	Seed Containers
Jikos	2		Centre	Seed Pre-treatment
Charcoal	0.5	Bag	Centre	Seed Pre-treatment
Sufurias	5		Centre	Seed Pre-treatment
Metal Cup	1		Centre	Seed Pre-treatment
Sack	1		Centre	Seed Pre-treatment
Knives	6		Centre	Seed Pre-treatment
Germination Boxes	8		Centre	Seed (6), Nursery (2)
Soil	4	Wheelbarrows	Site	Nursery Tech. & Est.
Sand	4	Wheelbarrows	Site	Nursery Tech. & Est
Manure	4	Wheelbarrows	Site	Nursery Tech. & Est
Ash	0.5	Wheelbarrows	Site	Nursery Tech. & Est

Broken Bricks	20	Bricks	Site	Nursery Est.
Wheelbarrows	2		Centre	
Soil Sieves	2		Centre	
Jembes	5		Centre	
Pangas	5		Centre	
Shovels	5		Centre	
Slashers	2		Centre	
Rakes	2		Centre	Nursery
Pruning Knives	2		Centre	Nursery
Small poles	10		Site	Nursery
Watering Cans	2		Centre	Nursery
Local Watering Can	1		Centre	Nursery, Planting
Water	100	Liter	Site	Watering
Small Stones	0.5	Wheelbarrows	Site	
Germinated seedlings	100		Centre	
Dibbler	1		Centre	
Dry Grass	0.5	Wheelbarrows	Site	Seed Bed
Polytubes	100		Centre	Seedlings
Milk packets	10		Centre	Seedlings
Tins	10		Centre	Seedlings
Seeds (Small and Big)	100		Centre	Nursery
Seedlings	20		Centre	Nursery, Planting
Seedlings Containers	2		Centre	Nursery, Planting
Charts of Planting and Tending	10		Centre	
Bottles	2		Centre	Bottle watering
Chart of Home Garden	1		Centre	ICRAF
Charts of Role of Trees in AF	3		Centre	ICRAF
Charts of Agroforestry system	5		Centre	ICRAF & Textbook
Charts of AF Techniques	5		Centre	From Textbook
Charts for Soil Conservation	2		Site	Soil C. Office
Video Camera	1		Centre	
Cameras	2		Centre	
Water Jerricans 20 Litres	6		Centre	
Water Jerricans 10 Litres	2		Centre	
Water	60	Litres	Mumoni	Drinking
Quencher	40	Litres	Centre	Drinking
Water Buckets	3		Centre	
Water Basins	2		Centre	
Water Jars	2		Centre	
Glasses	20		Site	
Detergent Powder	1	Packet	Centre	Washing
Seeds for Distribution			Centre	Distribution
Packets of polytubes			Centre	Distribution
Brochures	1000		Centre	Kamba,swahili,English
Stickers	400		Centre	Distribution

Field seminar Proceedings

Item	Quantity	Units	Source	Description
Plastic bowls	20		Centre	Quencher
Spoons	35		Centre	Eating
KCJ (Medium)	1		Centre	Kitchen
Plates	30		Centre	Eating
Video Deck	1		Centre	Video Show
TV Screen	1		Centre	Video show
Video tapes	3		Centre	Video show
Generator	1		Centre	Video show
Extension code	1	17 metres	Centre	Video show
Old sacks	10		Katse	Show enclosure
Tree nursery handbook	100		Centre	Distribution
Social forestry techniques part I	20		Centre	Distribution
Tent	1		Katse	Show enclosure

LIST OF ORGANIZERS AND INSTRUCTORS

Instructor

No.	Subject	Names	Designation	Department
1.	Registration	Ms. Joyce K. Mwinzi	Location Community Dev. Officer, Katse	Culture and Social Services
2.	Introduction	Mr. J. K. Lugadiru	Training Manager	SFTP
3.	Importance of tree Planting including useful species for Social Forestry	Mr. J. Nguniko Mr. Maina	Extension head foreman D.F.E.O	SFTP F.D. Kyuso
4.	Seed collection and Pre-treatment techniques	Mr. R. O. Nyambati Mr. L. Rateng	A.R.O. Seed technologist	SFTP SFTP
5.	Basic nursery establishment	Mr. C. O. Ndege Mr. A. Ali	Extension Officer Technician Trainee	SFTP "
6.	Simple nursery techniques	Mr. S. Mbingu	Nursery Foreman (Pilot Forest)	" "
7.	Planting, tending and tree management techniques	Mr. W.K. Bii Mr. N. Omambia	Assistant Training Officer Technician trainee	SFTP "
8.	Agroforestry	Mr. Mungai	Manager, Agroforestry, energy Centre, Kitui	Energy
9.	Soil Conservation	Mr. Charles M. Kubora Mr. Ngala Musyoka	Locational Agriculture Assitant "	Agriculture "
10.	Question and Answer	Mr. J. K. Cheboiwo Mr. N. M. Muniafu Mr. Y. Kubo	Project Manager Training Officer Japanese Training Expert	SFTP " "
11.	Video	Mr. M. J. Otieno	Technician	"
12.	Closing ceremony	Mr. Titus Maithya	Locational Chief, Katse	Administration

Other organizers

13.	Mr. Yasumuro	Japanese Training Leader	SFTP-Muguga
14.	Mr. T. Hirota	Japanese Training Expert	SFTP
15.	Mr. K. Yamauchi	Japanese Extension Expert	"
16.	Mrs. Redemter Mutembei	Assistant	"
17.	Mrs. Catherine Kang'alikya	"	"
18.	Ms. Janet Mutunga	"	"
19.	Ms. Mary Musyimi	"	"
20.	Ms. Josephine Ngunga	"	"
21.	Ms. Rose Mbithi	"	"

Catering

22.	Mr. K. M. Ochuka	Chef	SFTP
23.	Mr. Musili Yumbya	Assistant	"
24.	Mrs. Rhoda John	"	"
25.	Mrs. Zainabu	"	"
26.	Ms. Stella Nyamai	"	"
27.	Ms. Mwendu Mutisya	"	"

Drivers

28.	Mr. C. M. Oloo		SFTP
29.	Mr. Evans Ogake		"
30.	Mr. Charles Mulinya		"
31.	Mr. Solomon Munyua		"
32.	Mr. Sembi Muniifu		"
33.	Mr. Boniface Mutua		Fisheries

